

Welcome to the *Flyway Festival*

February 2011

Dear *Flyway Festival* Fan and Friend:

Greetings once again, from Mare Island. I am proud to invite you to the **San Francisco Bay Flyway Festival February 11-13, 2011**. Like me, I imagine that you are drawn outdoors particularly at this time of year because all around you, whether from your car in your daily travels, walking along your favorite stretch of trail or stepping outside your back door, you have noticed the return of shorebirds, waterfowl and hawks to the Bay. They are what brings us together each year for the Flyway Festival, aren't they?

Mare Island Magic Mix

We held our first Flyway Festival here at Mare Island 15 years ago last



month. What I love about this location is that Mare Island is surrounded with an abundance of our migrating neighbors from the north and at the same time with its unique assemblage of historic, natural and scenic features, it instantly takes us back to other eras. I experience a certain curiosity and sense of place that fills me with joy and awe as I cross the Napa River onto the island.

Early on a Saturday morning a few weeks ago as I crossed the blue bridge, four white geese or were they swans, flew upriver. (I'm just not a birder, yet) A few minutes later, as I arrived at the Shoreline Heritage Preserve, a red-tailed hawk so pale that I might have mistaken it for an osprey earlier in the season, circled low and landed high above me on a lightning rod before hunting for a time over the nearby field. Later in the day as we gathered in the quiet of the

Navy's oldest cemetery in the Pacific, with the only sounds the chanting and singing of four Russian Orthodox priests remembering and blessing the 8 Russian sailors buried there nearly 150 years ago. When the call of a red-shouldered hawk pierced through the ancient chants, songs and ringing bells. I thought to myself, "This is just the kind of day our Flyway Festival guests have come to expect each winter here on the island." I hope you will join us again this year for another great celebration and gathering of people as passionate about birds, wildlife, nature, history and recreation as you and I are.

Flyway Festival on the move

As magical as Mare Island is, it has been a tremendous challenge to hold the *Flyway Festival* here each

year and this year is no different. Given that we had quite a struggle last year with the last minute work of copper thieves that threatened to keep us in the dark, we have been forced to reconsider where we should hold

the event. I have considered moving to another town, but am committed to trying to keep the *Flyway Festival* on Mare Island. We have grown quite fond of our Wildlife Expo headquarters location for the past 9 years, but we are going somewhere new. Our Festival headquarters this year is Building 223. I wish I could say that we have a permanent home, but that doesn't seem to be the way things are here at Mare Island: change seems more the norm.

To keep the Flyway Festival forever free depends on you and me

We will need extra financial and volunteer help to ensure that our new space both feels welcoming to you and meets the needs of exhibitors and presenters. If you believe with all your hearts as I do, that the *Flyway Festival* fills a special need and purpose here on the "north shore" of



San Francisco Bay, I hope you will show your commitment with a generous contribution to help us keep the *Flyway Festival* free and provide the absolutely highest quality experience we can deliver.

Please make your donation to the Flyway Festival payable to:

Mare Island

Heritage Trust

Mail to: 816 Branciforte St. Vallejo, CA 94590

or to make a contribution by credit card visit:

www.mareislandpreserve.org

Click on the **DONATE** button.

Please call with questions: (707)-249-9633

Welcome our new Flyway Festival host

Finally, I am proud to share that the Flyway Festival is now hosted by the **Mare Island Heritage Trust**, a nonprofit organization I helped to found dedicated to ensuring year round public serving access and amenities on Mare Island along with scientific study and habitat restoration, environmental education, and quality recreational and historic attractions. With the City of Vallejo we manage the **Shoreline Heritage Preserve** at the southern end of the island that we began this Fall to open Friday through Sunday, 10am-5pm.

Weston Solutions has recently put the finishing touches on the new 2-mile **San Pablo Bay Walking Trail**, a wildlife viewing trail on the western shore of the island which is now open daily. I hope you get a chance to enjoy this spectacular and serene walk during the *Flyway Festival*.

These are exciting times when after years of being "suspended in

time", our efforts to provide improved visitor experiences at Mare Island are beginning to pay off.

Thank you for your pioneering support of the *Flyway Festival*, a harbinger of all the wonderful wildlife viewing and historic, scenic and recreational potential that has been locked away on Mare Island for more than 150 years.

If you are returning, we look forward to meeting up with you again. If this is your first time to join us at the Flyway Festival, we offer our warmest welcome. If you have recommendations, please do pass them along. We welcome you to invite others to join us. Pass this invitation along electronically or request to be added to our mailing list.

Thanks to Flyway Festival Co-founder Betsy Radtke and her husband Mark and daughters and friends and Sierra Coffee Company, we'll have hot soup, snacks, coffee and what we think is the best hot chocolate in the region, for you at the Wildlife Expo 9:00am-4:00pm Saturday and Sunday.

Happy trails and birdwatching to you

On behalf of my fellow board members and our Flyway Festival coordinating team, we look forward with great anticipation to spending the weekend with you in February.



Warmly,

Myrna Hayes
Festival Coordinator and
Co-founder
Mare Island Heritage Trust

Photo left: Brian Collett

Photo above left: Terry Clemens

San Francisco Bay *Flyway Festival*

Family Wildlife and Birding Expo

Friday, February 11 and Saturday February 12

5:30pm – 7:00pm
Festival and Art Exhibit
Opening Reception

Bay Area Wetlands to Ridgetops and North Bay Regional Wetlands Mare Island Shoreline Heritage Preserve Plein Air Paintout Shows

Building 223, 500 Connolly St. Mare Island

Preview fine art, sample wines of the Napa Valley, the Carneros region and beyond, and enjoy good company and food featuring Whole Foods–Napa and other contributors at the opening of the Flyway Festival and its Fine Art Exhibit with our Opening Reception and Festival Host, Weston Solutions, Inc. We welcome back local pianist Guy Arrostuto whose fine music ought to make our old industrial building sing like it never has in its more than 100 years!

Call for Art Flyway Festival Art Exhibition and Paintout

Photographers and painters of all ages and skills are invited to exhibit original work that depicts: local wildlife, San Francisco Bay regional landscape, and native habitats from San Francisco Bay to the ridgetops of Mt. Tamalpais and Mt. Diablo, especially wetlands, marshes, the San Francisco Bay Estuary and the Carquinez Strait. Fees: \$20 for up to 3 entries. Entry Forms postmarked or submitted via email by February 7.

North Bay Wetlands Regional Plein Air Paintout and Mare Island Shoreline Heritage Preserve Paintout: \$20 for up to 3 entries. Deliver paintout art submissions the same days and times as other art entries. [Entry forms](#) are on our website. For information call 707-552-7351 (let ring 6-7 times) or 707-249-9633 or [send an email](#) via our website.

Visit the Wildlife Expo and Support the Flyway Festival

Come in from the great outdoors to visit the more than 75 exhibitors, presenters, and art, jewelry and birding supply vendors waiting to show you a good time at our Family Wildlife Expo 9:00am to 4:00pm

Saturday and Sunday at Building 223, 500 Connolly St. on Mare Island. Your purchase of art, raffle tickets and your winning bids in our silent auction, all help keep our Festival wild and free.



Photo: Sue Wilson

7:15pm – 8:30pm
Those Whimsical Underground Owls: Saving the Western Burrowing Owl
Flyway Festival Featured Speaker Scott Artis, Founding Director of the Burrowing Owl Conservation Network
Repeats Saturday 2:30pm

In his talk on behalf of the Burrowing Owl Conservation Network and Mt. Diablo Audubon Society, Scott will explore the world of burrowing owls and discuss exciting efforts to conserve this **California Species of Special Concern**



and restore breeding populations throughout the Bay Area, California and North America and share the history of North America's only raptor to live and nest underground, explain why their population is on the decline, and how you can contribute to their preservation.

9:00am – 4:00pm
Bay Area Wetlands to Ridgetops Fine Art Exhibit, North Bay Regional Wetlands and Mare Island Shoreline Heritage Preserve Plein Air Paintout Show
Art Exhibition, [Building 223](#).
Repeats Friday 5:30-7:00pm and Sunday 9:00am-4:00pm

9:00am - 4:00pm
Nature Art, Learning and Crafts for Kids
Repeats Sunday 9:00am-4:00pm

Kids learn about birds and nature through hands-on activities about bird species and habitat, and art. Grown-ups help their own kids at self-learning stations. Kid's Nature Crafts area. Children must be accompanied by an adult.

10:00am-11:30am
Photographing Wildlife Workshop at the Wildlife Expo followed by a Field Trip (location TBA)

Wildlife photographer [David Rosen](#) will offer an hour and half workshop on photographing wildlife before heading out for some "on-site" photography with Bruce Webb, Swarovski Optik Field Technician who will provide scopes and camera housing for a demonstration of digiscoping. Wildlife Expo exhibitor [California Watchable Wildlife](#) is launching a photography contest in cooperation with [Outdoor California](#) magazine. Submissions must be taken at a Watchable Wildlife viewing site or be of a California species. Take David's workshop and get some tips for your contest entries.

10:00am – 11:15am
Photographing Panoramas with Julio Mestres
Repeats Friday, 3:30pm
See Friday 3:30pm description



Take advantage of the opportunity to meet the artists at our opening reception. Much of the art in our show is for sale. As one of the finest all nature art shows in the region, our Friday evening opening is a good time to consider an art purchase – it will help keep the Festival free and you may arrange your purchase with the artists directly this evening.

Wildlife Expo Saturday Feb 12 cont. and Sunday, Feb 13

11:00am-11:30am

Birding with an iPhone or iPad

Presenter: Nigel Hall, President Appweavers, Inc.
Peterson Birds of North America for iPhone and iPad
Repeats Saturday, 2:00pm, Sunday, 11:00am and Sunday 1:00pm

11:30am - 12:30pm

Native Bird Connections Raptor Show "In the Company of Raptors" Wildbird Show Sponsored by Swarovski Optik

Presenter: Jenny Papka, Co-Director and Curator
Native Bird Connections
Repeats Sunday 11:30am



Photo: John Klycinski

Once again Native Bird Connections will be back with live, non-releasable wild raptors. Join Jenny and the NBC crew for a fun, informative and spontaneous presentation highlighting bird information, stories, personal experiences and audience participation. Jenny has been a wildlife educator and manager for 20 years and experience with 35 species of raptors in captivity.

12noon - 1:00pm

National Wildlife Refuge Blue Goose Mascot visits the Flyway Festival

Get a hug, shake a hand and get a tattoo from the Blue Goose Mascot.

12:45pm-1:15pm

"Sing Thing" Family Singing with Sandi Morey

Sing traditional songs together about birds, animals and marshes. "Sing Thing" is an ongoing, family-oriented group singing program Sandi has been doing for over 30 years in the East Bay for everyone who likes to sing. We welcome her back to share music and a fun time with you. She'll have her CD's for sale. Learn more about Sandi and the "Sing Thing" at www.sandimorey.com

1:00pm-2:00pm

Hawk Identification

Jay Sheets - Hawk Talk, Presenter

Sixteen of your local favorite hawks, kites, harriers, and eagles will be talked about with an emphasis on their key field marks to make them more easily recognizable for you on field trips. Jay's slide presentation will help you find them and their habitat.

1:30pm - 2:30pm

Suisun Wildlife Center Slide Show and Live Wildlife Visit Wildbird Show Stage Sponsored by Swarovski Optik

Monique Liguori, Executive and Education Director assisted by Wildlife Center Manager Margie Furco, focuses on the 34-year effort of the Suisun Wildlife Center to care for and return to the wild injured and orphaned wildlife in Solano County. Non-releasable wildlife will be shown and principles of wildlife rehabilitation discussed. The Association's education programs reach 8-15,000 children and adults annually.

2:00pm-2:30pm

Birding with an iPhone or iPad

Presenter: Nigel Hall, President Appweavers, Inc.
Peterson Birds of North America for iPhone and iPad
Repeats Saturday, 2:00pm, Sunday, 11:00am and Sunday 1:00pm



Photo: John Klycins

2:30-3:30pm

Those Whimsical Underground Owls: Saving the Western Burrowing Owl Flyway Festival Featured Speaker Scott Artis, Founding Director of the Burrowing Owl Conservation Network
Repeats Friday 7:15pm

See Friday 7:15pm description

Sunday, February 13

9:00am - 4:00pm

Bay Area Wetlands to Ridgetops Fine Art Exhibit, North Bay Regional Island Shoreline Heritage Preserve Plein

Wetlands and Mare Island Shoreline Heritage Preserve Plein Air Paintout Show Building 223.

Repeats Friday 5:30-7:00pm and Saturday 9:00am-4:00pm

9:00am - 4:00pm

Nature Art, Learning and Crafts for Kids

Repeats Saturday 9:00am-4:00pm

11:00am-11:30am
Birding with an iPhone or iPad

Presenter: Nigel Hall, President Appweavers, Inc.
Peterson Birds of North America for iPhone and iPad
Repeats Saturday, 11:00am and 2:00pm and Sunday 1:00pm

11:30am - 12:30pm

Native Bird Connections Raptor Show "In the Company of Raptors" Wildbird Show Sponsored by Swarovski Optik

Presenter: Jenny Papka, Co-Director and Curator
Native Bird Connections

Repeats Saturday 11:30am

See Saturday 11:30am description

1:00pm-1:30pm

Birding with an iPhone or iPad

Presenter: Nigel Hall, President Appweavers, Inc.
Peterson Birds of North America for iPhone and iPad
Repeats Saturday, 11:00am and 2:00pm and Sunday 11:00am

1:30pm-2:30pm

5 Great Reasons to Use "eBird"!

Dave McMullen, Napa-Solano Audubon Society

Do you keep records of your bird-watching? Learn about the "eBird" web site, where you can organize all your bird watching records and your life list. Dave will introduce you to eBird and give a demonstration and touch on the benefits as a "citizen science" resource. Learn about "eBird Explorer", a tool on Napa-Solano Audubon website, available for all birders in the Bay Area (even those who do not put their own records in eBird). You might become an "eBirder!" following this talk.



Artist: Nell Evans, age 7

Wildlife Expo Sunday February 13 cont. and Sponsors

2:30-3:30pm

International Bird Rescue Research Center: Bird Rescue response at the Gulf Oil Spill Slide Show

Starting in late April 2010, a team of bird rescue specialists from International Bird Rescue Research Center (IBRRC) worked along the Gulf Coast to help with an all-hands-on-deck effort to rescue seabirds caught in the BP Deepwater Horizon well blow out. IBRRC teamed with Tri-State Bird Rescue, the lead oiled wildlife organization on the ground, to staff rehabilitation centers in Louisiana, Alabama, Mississippi and Florida.

Michelle Bellizzi has been the Rehabilitation Manager at IBRRC's Cordelia center since 2000. She spent 4 1/2 months managing the Alabama oiled bird center for that spill. This illustrated talk will highlight the challenges and obstacles presented during this spill with emphasis on the unique bird species such as frigate birds, roseate spoonbills and northern gannets that required special feeding, housing and other considerations.

For additional information call: 707-649-WING(9464) or 707-249-9633
SFBayFlywayFestival.com
www.MareIslandPreserve.org



Photo: John Klycinski

All events are open to the public and free of charge—unless otherwise noted. Some activities require pre-registration.

Thanks to the City of Vallejo, the U.S. Navy, the U.S. Fish & Wildlife Service and Lennar Mare Island for use of the facilities on Mare Island.

For information about local birding, check out these websites:

- *www.birdingonthe.net
- *<http://fog.ccsf.cc.ca.us/~jmorlan/>
- *www.napasolanoaudubon.com/EBird/Explorer

Northern California BirdBox phone: 415-681-7422

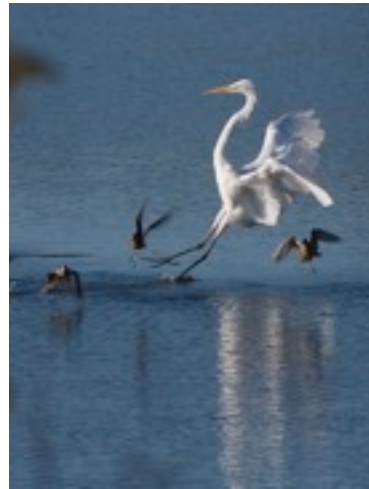


Photo: Kathleen R. Fenton

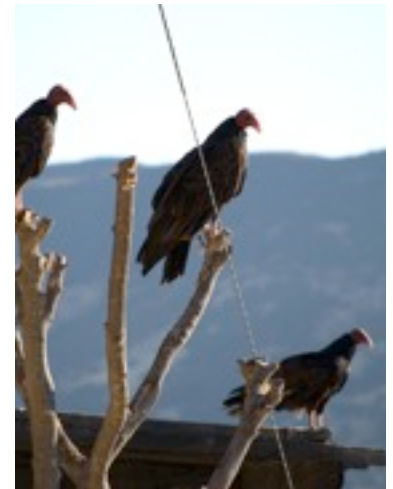


Photo: Kathleen R. Fenton



Festival Host

(\$5,000 and up)

Weston Solutions, Inc.
CH2M HILL

Major Sponsors

(\$1,000 - \$1,999)

Swarovski Optik of North America
Vallejo Sanitation and Flood Control District
Vallejo Watershed Alliance
Lennar Mare Island In-kind
Island Energy In-kind

Festival Supporters

(\$500 to \$999)

Crockett Cogeneration
Internet Services Inc. In-kind

Festival Donors

(\$250 to \$499)

Napa Solano Audubon Society
San Francisco Bay Joint Venture
Vallejo Convention and Visitors Bureau In-kind
Whole Foods - Napa In-kind

Festival Friends (\$100 to \$249)

Appweavers, Inc. Peterson Birds of North America for iPhone and iPad
Burrowing Owl Conservation Network
California Native Plant Society Willis L. Jepson Chapter
Citizens Committee to Complete the Refuge
Down Window Press In-kind
Friends of San Pablo Bay National Wildlife Refuge
Friends of the Napa River
Friends of the Swainson's Hawk
Goodfellow Wine In-kind
Robin Leong
Marin Audubon Society
Mt. Diablo Audubon Society
Out of this World In-kind
Point Reyes National Seashore Association
Reyes Paintings In-kind
Saintsbury Winery In-kind
Save Our Sail
Save San Pablo Baylands In-kind
Solano County Outdoor Recreation Events
Vaca Valley Volks
Wild Bryde Jewelry In-kind

Mare Island Outings Friday February 11

8:00am-5:00pm

San Pablo Bay Walking Trail Self-Guided Walk Hosted by Weston Solutions, Inc. and Swarovski Optik

Repeats Saturday and Sunday 8:00am-5:00pm

Explore the wetland habitats of Mare Island on a self-guided bird and wildlife viewing trail beginning at the Wildlife Expo from Building 223 if walking to the trailhead, or if driving, at the parking lot at 750 Dump Rd. the end of A St at Azuar Dr.

Bruce Webb, Swarovski Field Technician will set up on the trail with scopes and binoculars and give digiscoping demonstrations throughout all 3 days. Check at the Swarovski booth at the Wildlife Expo, Building 223 for specific times and locations. All ages. Bring binoculars and cameras.

10:00am – 5:00pm

Mare Island Shoreline Heritage Preserve Self-guided Walk

Repeats Saturday and Sunday 9:00am-5:00pm

Walk or bike at your own pace as far as you like on the 1.3 mile paved road with 14 points of interest along the route to the hilltop scenic vista and beyond. Stop at the Mare Island Naval Cemetery. The Visitor Center is open. Dogs are allowed on leash.

Directions: From the Mare Island entrance take the first left on Nimitz and go to 15th St. Turn right and follow to Railroad Ave. Go left on

Railroad Ave. Continue beyond gate. Park on left. From Marin or Napa take the Mare Island exit off of Hwy 37 and follow Walnut Ave. south to stop sign at "G" St. Turn left. Turn right at 2nd right at Nimitz Ave. Follow directions above. From the Festival headquarters travel east on Connolly St. to Nimitz

Ave. Turn right and follow direction signs.

11:00am-1:00pm

Mare Island Hike on the Westside of the Shoreline Heritage Preserve

with Kenn Browne, Sierra Club Solano Group hike leader

This annual Flyway Festival hike through the Western Magazine Area of the Mare Island Shoreline Heritage Preserve is a level 5.5 mile hike on gravel and dirt roads through pickleweed and saltmarshes, prime salt marsh harvest mouse and clapper rail habitat, out to Pier 35 on the southern tip of Mare Island. At Pier 35 ospreys nest in light towers, Always lots of waterfowl in San Pablo Bay. Bring drinking water, snacks and raingear. No facilities. Group must stay together; locked gate, so no early departures. Meet at corner of Nereus and Flagship Dr. Call Kenn Browne 707-319-1846.

Directions: From I-80 take Tennessee St. exit west towards Mare Island. Continue on Mare Island to Azuar Dr. (at the end of G St.). Turn left. Follow Azuar to light at Flagship Dr. Turn right. Go to Nereus. Park on Nereus. From Marin, Sonoma and Napa Counties take the Mare Island exit off of Hwy 37 and follow Walnut Ave. to G. St. Turn right, Turn left on Azuar Dr. Follow directions above.



Photo: Sue Wilson

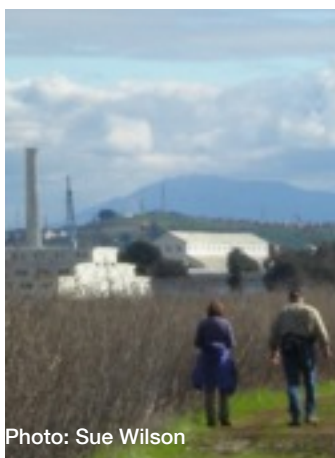


Photo: Sue Wilson

1:45pm – 5:00pm

Mare Island Birding Hot Spots Tour

Robin Leong and Wally Neville, Napa-Solano Audubon Society field trip leaders

Get to know what's on Mare Island. Stroll amongst "Captain's Row", Alden Park, and the grounds around St. Peter's Chapel. Learn about the people, it's historic buildings, the trees, avian fauna, and possibly, monarch butterflies. **Meet at "Outing Tent", Building 223** to form carpools. If you have a

"walkie-talkie" bring it and tune to 11-22 the bird channel.

3:30pm – 4:45pm

Photographing Panoramas with Julio Mestres

Repeats Saturday, 10:00am

Vallejo resident Julio Mestres will show you what he knows about creating panoramic photos. He will give a quick orientation of the technique used for stitching photographs and editing the resulting image by using readily available software from the internet. He'll explain what preparation is needed to obtain the image using a panohead on a tripod or a simple homemade plumb on any camera and how to obtain the required collection of sequential shots in creating the composition. Also, he will explain the use of photo editing software to highlight the resulting image, sizing the image and setting up the final composition for printing. He will also demonstrate the techniques he uses in the field. His photography is exceptional and his enthusiasm inspirational. **Building 223.**



Photo: Gerry Cortez

Weather

Weather can't keep Flyway Festival folks indoors, so remember, our outings take place rain or shine. Only very heavy rain cancels outings and our Wildlife and Birding Expo is indoors.

What to wear and bring

Plan to dress warmly! Bring binoculars, a viewing scope and camera. Weather could be sunny, foggy, windy or lightly rainy; dress for all possibilities. Only heavy rain cancels outings. Walking shoes recommended and waterproof footwear advised for some sites. Bring a snack and drinks if desired for outings. Many outing sites do not have restroom facilities.

Mare Island Outings Saturday February 12

8:00am-5:00pm

San Pablo Bay Walking Trail Self-Guided Walk Hosted by Weston Solutions, Inc. and Swarovski Optik

Repeats Saturday and Sunday 8:00am-5:00pm

See Friday 8am description and directions

9:00am - 4:00pm

American Volkssport Association 5k and 10k Volkswalk

Repeats Sunday 9:00am-4:00pm

Hosted by the Vaca Valley Volks chapter of the California and American Volkssport Associations. Route includes our Self-Guided San Pablo Bay Walking Trail and an exciting loop that crosses both bridges linking Mare Island to the "mainland". **Start 9am-12noon Saturday and/or Sunday.** Finish by 4pm. Register at **Building 223.** Anyone can walk the route at no charge. Fee \$3-\$7 for AVA credit and/or awards. Visit VacaVolks.org. Call Howard McGill at 707-447-9431 or email: hiwayhowie@aol.com

9:00am – 5:00pm

Mare Island Shoreline Heritage Preserve Self-guided Walk

Repeats Friday 10:00am-5pm and Sunday 9:00am-5:00pm

See Friday 10am for description and directions



Photo: Sarah Evans

Mare Island Naval Shipyard Cemetery dating from 1858, and see Great Blue Heron and Osprey nests. Level 4 mile walk on paved and gravel roads. Meet at Palmer's Hut in the Preserve. Info: Brian Collett 530-220-3121.

See Friday 10:00am for directions to the Preserve

9:45am - 11:45am

Discover Mare Island's Historic Naval Ammunition Depot by Van Tour Trip leader– Susan Young, Weston Solutions, Inc. and former Mare Island Shipyard worker

Repeats Saturday, 11:45am and 1:45pm and Sunday, 9:45am and 11:45pm

Join this unforgettable driving tour to the scenic highest point on the "original" Mare Island. Spectacular 360 degree vista point (barring fog), view the Carquinez Strait, the San Pablo Bay Refuge and the Art Tribute dedicated to Mare Island workers. Discover the history, learn about the environmental cleanup at this unique national historical site. Pre-sign in at the Weston Solutions Exhibit. Meet at the "Outing Tent" in front of **Building 223.**

10:00am – 11:00am

Walking Tour of Historic Mare Island Naval Shipyard

Join Mare Island Historic Park docent Chris Pantony for a guided walk through the heart of the former shipbuilding operations at the oldest U.S. Naval facility in the Pacific, founded in 1854 and closed in 1996. See many of the 500 buildings and structures that led the National Park Service to designate Mare Island as a National Historic Landmark, including Alden Park, the Captain's Row Mansions and



Photo: Sue Wilson

the Drydocks and Building Ways. Meet at the "Outing Tent" at the Wildlife Expo, Building 223 to carpool or at Alden Park 8th St. & Railroad Ave.

10:00am – 4:00pm

Come Aboard the former USS LCS(L) 102 Mighty Midget Restored WWII Landing Craft Support Gunboat

Mare Island is home to the last of its kind of the 130 boats built for this purpose during WWII. Tours are free.

Directions: From Vallejo: cross the Causeway, an extension of

Tennessee St. Turn left on Nimitz Ave. Turn left on A St. to Berth 6. **From Marin, Sonoma and Napa Counties:** Take the Mare Island exit off of Hwy 37. Turn right and continue on Walnut Ave. to G St. Turn left two blocks and turn right onto Nimitz Ave. Follow directions above. **From Contra Costa County:** Cross Benicia Martinez Bridge onto I-780. Exit I-80 eastbound towards Sacramento. Exit Tennessee St./Mare Island. Follow directions above. **From the Building 223 Wildlife Expo:** Follow Connolly St. eastbound to Nimitz Ave. Turn left. Continue on Nimitz Ave. to A St. Turn right to Berth 6.

10:00am - 4:00pm

Tour of St. Peter's Chapel and the Mare Island Museum

Repeats Sunday 10am-4pm

St. Peter's Chapel, the oldest Navy chapel built in 1900, is home to the most Tiffany glass on a single site in the West.

Directions: Park across from Chapel Park located at the south end of Walnut Ave beyond Captain's Row mansions (right turn at end of Captain's Row onto alley, then left turn and left turn again, onto Walnut Ave northbound to parking lot). The Museum is located in Building 46. Entrance across from Alden Park at 8th St. and Railroad Ave. Donation: \$3 per person for each site.



Photo: Brian Collett

11:45am - 1:45pm

Discover the Historic Naval Ammunition Depot by Van Tour Trip leader– Susan Young, Weston Solutions, Inc. and former Mare Island Shipyard worker

Repeats Saturday, 9:45am and 1:45pm and Sunday, 9:45am and 11:45am

See Saturday 9:45am for description and directions

12noon-3:00pm

Guadalcanal Village Wetland Restoration Shorebird Observation

Join Refuge volunteer Sheila Byrne Ph.D to view the Caltrans Guadalcanal Village wetland restoration. Information about the restoration and telescopes for shorebird viewing provided. A Refuge van shuttle will leave from the "Outing Tent" in front of **Building 223** every 30 minutes for transport to and from the site, or drive and park.

Driving Directions from Festival Expo: Travel north on Railroad Ave. to flashing stoplight at G St. Continue through the North Gate. Make immediate left onto Hwy 37 overpass. Turn left into parking lot.

Mare Island Outings Saturday February 12 cont.

1:00pm-3:00pm

Mare Island San Pablo Bay Walking Trail Hike

Leader Brian Collett, Sierra Club hike leader

This trail was completed by Festival and Trail Host **Weston Solutions** in December and its grand opening is this weekend. Explore the western edge of Mare Island adjacent to the San Pablo Bay National Wildlife Refuge on more than 2 miles of new trails that border endangered salt marsh harvest mouse habitat with views of San Pablo Bay, Mt. Tamalpais and Sonoma Mountain. Seasonal wetlands with ducks, egrets and shorebirds. **Directions:** Walk from the Festival Expo [Building 223](#) north through the parking lots west of Walnut Ave. then make a left turn onto A. St. Follow extension of A St. on the gravel road to the trailhead. Or, drive to the lot at the west end of A Street (750 Dump Rd.) off Azuar Dr. Leader Brian Collett 530-220-3121

1:30-3:30pm

Mare Island Native Plant and Mushroom Walk

Repeats Sunday 10:00am with Brian Collett

Join Jake Rugyt, California Native Plant Society-Napa Chapter field trip leader for a native plant and mushroom scouting outing on Mare Island. Depending on the weather, expect to see a great variety of mushrooms and remarkable native plant communities, both of which are still being “discovered” on the unique “island habitat” of the former military base. **Meet at the “Outing Tent”** at the front of **Building 223** to form a carpool.

1:45pm - 3:45pm

Discover Mare Island’s Historic Naval Ammunition Depot by Van Tour

Trip leader– Susan Young, Weston Solutions, Inc. and former Mare Island Shipyard worker

Repeats Saturday, 9:45am and 11:45am and Sunday, 9:45am and 11:45am

See Saturday 9:45am for description and directions

7:00pm - 11:00pm



Introductory Night Photography Workshop on Mare Island

With Tim Baskerville, Founder/Director of The Nocturnes

<http://www.thenocturnes.com/workshops/flyway.html>

Location: Mare Island Naval Shipyard, established in 1854, was the first naval facility on

the Pacific Coast. At one point in its history, more than 40,000 men and women worked at the island’s drydocks, shops and warehouses.

Tuition and Registration: In the spirit of our commitment to keeping the Festival free, The Nocturnes and the San Francisco Bay Flyway Festival offer a FREE introductory Night Photography workshop again this year. To register - fill out our Registration Form and send or FAX it in to Pacific Media Arts (**form must be received no later than February 3rd**). Call Susan Nichols at Pacific Media Arts - (707) 645-9860. (NOTE: the moonlight will NOT be a factor photographically this year – only available light!).



Photo: Sarah Evans

Travel Directions

Bus and BART

Vallejo Express BARTLink bus between El Cerrito Del Norte BART station and Vallejo daily every 30 minutes. Visit website or call for additional information. At the Vallejo Ferry Terminal transfer (free) to #5 Redwood bus to the Mare Island main gate. Buses accommodate bikes. Casual carpool(as in hitchhike!) or walk from Mare Island entrance to Festival site. Call 707-648-4666 M-F 8am-5:30pm or visit www.vallejostransit.com.

Ferry/Express Bus to/from SF Ferry Building

The Vallejo Ferry and Express Route 200 supplemental bus service to and from San Francisco Ferry Building from Vallejo Ferry terminal is approximately 1 hour. Vallejo Ferry departs San Francisco Ferry Building weekdays 12 times and 3 times per day on weekends. Bikes allowed on ferries and buses. Tickets must be purchased in advance at Bay Crossings-SF Ferry Building and Vallejo Ferry Terminal. One-way fares: \$13 for adults, \$6.50 for youth, senior, disabled. Roundtrip Daypass for Vallejo ferry, local Vallejo buses and BARTLink 80 service to and from El Cerrito Del Norte BART fares; \$24 for adults. Senior (65+), youth (6-12) and disabled, \$13. Age 5 and under: free. Call 877-64-FERRY or visit www.baylinkferry.com.

To pre-arrange transportation to and from Vallejo Ferry terminal to Festival: Call 707-249-9633.

Taxi Service

707-643-3333 or 707-642-4421 upon arrival in Vallejo

Auto Access

Regional driving directions listed on the Sunday Mare Island Outings page



Photo: Kathleen Fenton

Mare Island Outings Sunday February 13

8:00am-5:00pm

San Pablo Bay Walking Trail Self-Guided Walk Hosted by Weston Solutions, Inc. and Swarovski Optik

Repeats Friday and Saturday 8:00am-5:00pm

See Friday 8:00am description and directions

9:00am - 4:00pm

American Volkssport Association Sanctioned 5k and 10k Volkswalk

Repeats Saturday 9:00am-4:00pm

See Saturday 9:00am description and directions

9:00am – 5:00pm

Mare Island Shoreline Heritage Preserve Self-guided Walk

Repeats Friday 10:00am-5:00pm and Saturday 9:00am-5:00pm

See Friday 10:00am description and directions

9:30am - 12noon

Mare Island Historic Southshore Walk

With Kenn Browne, Sierra Club Solano Group hike leader

Repeats Saturday 9:30am with Brian Collett

Leader Kenn Browne 707-319-1846.

See Saturday 9:30am description and directions

9:45am - 11:45am

Discover Mare Island's Historic Naval Ammunition Depot by Van Tour
Trip leader– Susan Young, Weston Solutions, Inc. and former Mare Island Shipyard worker

Repeats Saturday, 9:45am, 11:45am and 1:45pm and Sunday, 11:45am

See Saturday 9:45am description and directions

10:00am-12noon

Mare Island Native Plant and Mushroom Walk

Repeats Saturday 1:30pm with Jake Rugyt

Join Brian Collett, Preserve Naturalist and Mare Island Heritage Trust founding board member for a combination native plant and mushroom scouting outing and focus on raptors in abundance in the skies above the Preserve and often seen soaring below its bluffs.

See Saturday, 1:30pm description for more details.

Meet at 9:45am at the "Outing Tent" in front of **Building 223** to form a carpool or follow Friday 10:00am directions to the Preserve. Meet at Palmer's Hut in the Preserve.

10:00am-2:00pm
History of the Mare Island Naval Cemetery Docent-led Tour

Join Cemetery Docent Peggy O'Drain at the Mare Island Naval Cemetery, the Navy's oldest cemetery in the Pacific founded in 1858. Peggy is researching for a book about its history and those buried there, including the first recorded burial, Quartermaster George Dowd of the USS Massachusetts, on February 12, 1856 – 155 years ago this very Saturday. She will focus her tour on "Section A" of the cemetery where Anna Key Turner, a daughter of Francis Scott Key, author of our national anthem, is buried with her husband, some of their children and other early residents of Mare Island, many of whom were not Navy officers. Learn more about the cemetery and the Mare Island Shoreline Heritage Preserve where it is located by visiting

www.mareislandpreserve.org

See Friday 10am directions



Photo: Gerry Cortez

10:00am – 4:00pm

Tour St. Peter's Chapel and Mare Island Museum

Repeats Saturday 10am-4pm

10:00am – 4:00pm

Tour St. Peter's Chapel and Mare Island Museum

Repeats Saturday 10am-4pm

See Saturday 10:00am description and directions

11:45am - 1:45pm

Discover Mare Island's Historic Naval Ammunition Depot by Van Tour

Trip leader– Susan Young, Weston

Solutions, Inc. and former Mare Island Shipyard worker

Repeats Saturday, 9:45am, 11:45am and 1:45pm and Sunday, 9:45am

See Saturday 9:45am for description and directions

Auto access to Mare Island

From I-80 east or westbound: Exit Tennessee St., continue west to the entrance to Mare Island. Follow Festival signs.

From Napa and Sonoma: Travel south on Highway 29 to Tennessee St., turn right and follow directions above.

From Contra Costa County: Cross the Benicia-Martinez Bridge on I-680. Take I-780 west toward Benicia and Vallejo. Continue on I-780 for approximately 7 miles. Exit at I-80 east. Continue on I-80 toward Sacramento. Exit on Tennessee St. and follow directions above.

From Marin and Sonoma: Travel east on Highway 37 to the Mare Island exit just before the Napa River Bridge. Turn right at the north entrance to Mare Island; continue to Festival.



Photo: John Klycinski

Lodging

Vallejo

Best Western Inn: 707-554-9655; 877-554-9655

Comfort Inn: 707-648-1400

America's Best Value Inn: 707-554-8000

Courtyard by Marriot Vallejo/Napa Valley: 707-644-1200; 800-321-2211

Fairgrounds Dr. Motel 6: 707-642-7781; 800-466-8356

Howard Johnson Inn and Suites: 707-643-1061; 800-424-6423

Marineworld Pkwy Motel 6: 707-643-7611; 800-466-8356

Ramada Inn: 707-643-2700; 800-272-6232

American Canyon

Gaia Napa Valley Hotel: 707-674-2100; 888-798-3777

Flyway Festival weekend special rate: \$89 per night!

RV & Campground

Skyline Wilderness Park, Napa: 707-252-0481

Regional Outings Friday and Saturday February 11 and 12

8:00am – 11:00am

Ducks, Shorebirds, and Raptors of American Canyon Wetlands

David Takeuchi, Field Trip Chairman, Napa Solano Audubon Society
We will bird Eucalyptus Drive and part of the newly opened American Canyon Wetlands trail which goes to the Napa River as time permits. This area is part of the Pacific Flyway for migrating waterfowl. We expect to see winter ducks and woodland birds in the Eucalyptus trees. If the tide is accommodating, we will see shore birds.

Directions: Meet at 8:00 AM at the parking lot at the corner of Eucalyptus Drive and Wetlands Edge Road. From Highway 29 coming from Vallejo, turn left on West American Canyon Road. Drive to the end and turn right on Wetlands Edge Road. Drive to the end and turn left on Eucalyptus Drive. Coming from Napa, turn right on Rio Del Mar, make a sharp right on Eucalyptus Drive, and drive to the end.

9:00am-12:30pm

Raptors at Hudeman Slough

Repeats Saturday 12:30pm

In the place of our Skaggs Island hawk outings this year [we expect to return to the former Navy property in 2012 after it becomes part of the San Pablo Bay National Wildlife Refuge], join field trip leader Murray Berner for a birding walk on an easy jaunt along the 2.5 miles of walking trails at the Hudeman Slough wetland restoration in the Carneros region of Southern Sonoma County. The enhanced wetlands, managed by the Sonoma County Water Agency & Sonoma County Sanitation with California Department of Fish & Game are former hayfields restored to a mix of tidal wetlands, grasslands, pickleweed marsh, seasonal wetlands & ponds, permanent



Photo: Bob Dyer

ponds and tied to nearby Hudeman Slough. You will see waterbirds and search for a variety of buteos, including red-tailed, ferruginous, and rough-legged Hawks. Previous festival outings at nearby Skaggs Island have observed 4 species of falcons. Golden eagle is a distinct possibility. Short-eared Owl was seen here in late January. All ages and levels of birding experience welcomed! Note: This is a rain or shine outing. Only heavy rain cancels!

Directions: From Napa, Vallejo & East Bay, turn west at the stoplight from Highway 29 onto Highway 12/121. Continue to Duhig Rd. Turn left and proceed on Duhig until it becomes Ramal Rd. at a sharp turn over Huichica Creek. Continue on Ramal Rd. past Skaggs Island Rd. The gravel parking lot is on the left approx. 1 mile past Skaggs Island Rd. A large barn is located near the parking area. Meet at the green and blue interpretive sign adjacent to the parking lot. From Petaluma, Sonoma & Marin, turn right from Highway 12/121 onto Ramal Rd. Continue on Ramal Rd. approx. 2 miles to the gravel lot described above.



Photo: Bob Dyer

Rail have been observed around the pond edges.
www.petalumawetlandspark.org

Directions: From Hwy 37, turn north onto Lakeville Hwy and left at 2nd signal, South McDowell Blvd. Directions: From Hwy 37, turn north on Lakeville Hwy and left at 2nd signal, South McDowell Blvd. Drive one-half mile to Cypress Drive and follow to the entrance of the Ellis Creek Water Recycling Facility where the tour starts. Sign-ups not required. Call Bob Dyer with questions, (707) 763-2934.

2:00pm – 3:00pm

Suisun Wildlife Center Tour

The Suisun Marsh Natural History Association presents a tour of its Suisun Wildlife Center, which rescues and releases back to the wild Solano County wildlife. Go behind the scenes to learn how injured wildlife is helped. See the center's non-releasable education birds and animals—a Golden Eagle, a recently acquired Coyote, Red-tailed Hawk and more.

Limit: 30 participants. To preregister call 707-429-4295. Directions: From I-80 exit at Hwy 12 in Fairfield-near the Budweiser Brewery. Travel East on Hwy 12 toward Suisun for 3 miles to the first exit AFTER the Pennsylvania St. exit. Exit at the Civic Center Blvd/Suisun City Business District exit. Turn left onto Main St. Proceed to stop sign past downtown. Turn left onto Cordelia Rd. Take next right to 1171 Kellogg St.



Photo: Brian Collett

Saturday, February 12

5:30am – 6:45am

A Railing We Will Go!

Have you heard of owling and been? What about railing? Join Robin Leong for an early morning search for the voices of these elusive and rare residents of American Canyon Wetlands. Probable candidates are Sora, Virginia, Black and California Clapper Rails. Heavy rain cancels.

See Friday 8:00am driving directions

Regional Outings Saturday Feb 12 cont.

8:00am-11:00am

Field trip to International Bird Research and Rescue Center, Cordelia and the Fairfield/Suisun Waste Water Treatment Plant
David Takeuchi, Field Trip Chairman, Napa Solano Audubon Society

Tour the International Bird Research Rescue Center with IBRRS volunteer, and Napa Solano Audubon member, Karen Sheldon. Following the February 1971 collision of two Standard Oil tankers beneath the Golden Gate Bridge spilling 900,000 gallons of crude oil, a group of volunteers formed the International Bird Rescue Research Center (IBRRC). Goals were to develop oiled wildlife cleaning and rehabilitation techniques, promote ongoing research in this field and provide oiled wildlife response capabilities. IBRRC has cared for over 140 species of wild birds, mammals, reptiles and amphibians through the state and beyond.

Following the IBRRC tour, visit the Fairfield/Suisun Water Treatment Plant with host Rita Arwine, Director of Business Affairs. The plant plays an important environmental role in treating wastewater for release into the Suisun Marsh. A great site to study duck identification because of the variety and close range.

Number of participants limited to 20. Email David Takeuchi, birdNE1@aol.com to reserve.



Photo: Sarah Evans

from American Canyon Wetlands to look for waterfowl and shorebirds, to American Canyon Quarry to look for raptors.

See Friday 8:00am directions

8:30am – 11:30am

Bird Photography Safari
Alviso Ponds, Mountain View

Don Edwards San Francisco Bay National Wildlife Refuge

Photograph shorebirds and waterfowl on the former Alviso salt ponds with docent Alex Baranda. Program provides a “backstage pass” to birding spots not usually accessible to the public. Program will require travel both by van and by foot. Hike up to 3 miles in muddy conditions. Reservations required. Call 408-262-5513 x106.

8:45am – 12noon

Birds at Bahia

Marin Audubon Society Field Trip Leader, Lowell Sykes

Rare blue oak woodlands bordering salt marsh habitat. Shallow, newly restored fresh water ponds & tidal marshes provide excellent habitat for diverse assemblage of birds. Expect to see migratory shorebirds, waterfowl, diving birds and raptors, as well as land birds on the adjacent oak woodlands and grasslands. All levels welcome.

Directions: From Hwy 101 in Novato, take Atherton Ave exit, go east, and turn left onto Bugeia Drive, which becomes Bahia Drive. Park at the end of Bahia Drive. From Hwy 37, take Atherton Ave. exit, travel north on Atherton Avenue & follow directions above. For information, call 415-388-2821. Heavy rain cancels.



Photo: Sue Wilson

9:00am-12noon

Volunteer at Lynch Canyon

Solano Land Trust and the Bay Area Ridge Trail Council lead a 25th Anniversary Volunteer Day from 9 a.m. to noon. RSVP (707) 432-0150 x 200 or volunteer@solanolandtrust.org. No dogs. \$5 parking fee (parking fee waivers for volunteers).

9:00am-3:00pm

Self-guided bird walk American Canyon Wetlands

Repeats Sunday 9:00am-3:00pm

Expert volunteer members of the Napa Solano Audubon Society with

viewing scopes will offer self-guided bird walks with four viewing stations. Visit the welcome table with interpretive brochures, educational handouts, and a trail guide.

Directions: Welcome table at the corner of Eucalyptus Drive and Wetlands Edge Road. **See Friday 8:00am for driving directions.**

9:00am-5:00pm

Explore Lynch Canyon Open Space

Repeats Sunday 9:00am-5:00pm

After being closed due to budget cuts, Lynch Canyon reopens weekends through June. Now is the time to get out to this Solano County Park. No dogs. \$5 parking fee (fee waivers available for volunteers- see 9:00am activity).

Directions: From I-80 westbound, exit American Canyon Rd. Cross overpass and turn left onto McGary Road. Continue to Lynch Canyon Rd. Go under freeway to entrance gate and parking lot. From I-80 eastbound, exit at American Canyon Rd./Hiddenbrooke. Turn right, then left onto McGary Rd. and follow directions above.

9:30am – 12noon

Ellis Creek Wetlands Tour
Led by Park docents with viewing scopes, Petaluma Wetlands Alliance

Repeats Friday, 9:30am

Second annual Flyway Festival tour along a 2-mile trail around 30 acres of polishing wetlands opened to the public 9n 2009. See migratory duck and possibly unusual species that have been spotted: Swamp Sparrow, Tundra Swan and Greater White-fronted Goose. Sora and Virginia Rail have been observed around the pond edges. www.petalumawetlandspark.org

Directions: From Hwy 37, turn north on Lakeville Hwy and left at 2nd signal, South McDowell Blvd. Drive one-half mile to Cypress Drive and follow to the entrance of the Ellis Creek Water Recycling Facility where the tour starts. Sign-ups not required. Call Bob Dyer with questions, (707) 763-2934.

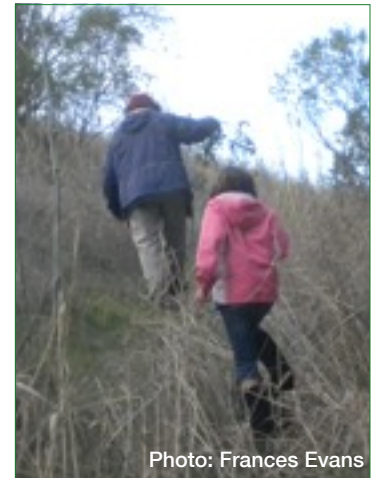


Photo: Frances Evans

Regional Outings Saturday Feb 12 cont.

9:30am – 11:30am

Sonoma Baylands Tidal Wetland Walk

Meet Leia Giambastiani native plant restoration manager for San Pablo Bay NWR to view and learn about wetland transition zone restoration in this developing marsh habitat and plans after addition to the Refuge, for these 348 acre tidal wetlands constructed by the U.S. Army Corps of Engineers in 1995.

Directions: Turn south off Hwy 37 at Port Sonoma Marina, follow the directional signs.

9:30am – 12noon

Community Service at the Visitor Center, Fremont Don Edwards San Francisco Bay National Wildlife Refuge

Improve the refuge for visitors and wildlife alike: join us in Fremont for a community service project. Pickup trash or do a planting/weeding project. Dress appropriately. Gloves and tools provided. Bring your own water bottle. Meet in the parking lot at the Visitor Center. Drive 2.5 miles, if project is at a different location. For reservations, call 510-792-0222 ext. 363.

10:00am-11:00am

Behind the Scenes Tour International Bird Rescue Research Center in Cordelia

Repeats Saturday 1:30pm

International Bird Rescue Research Center (IBRRC) is known throughout the world as one of the leading authorities on the care and rehabilitation of aquatic birds that are victims of oil spills. They also operate rehabilitation clinics in both northern and southern California year-round. Watch a slide presentation that highlights some of the birds received and the basics of aquatic bird care practiced at the clinic and tour the hospital and bird washing facilities. This is a working hospital so animals are not on display.

Limit: 12 participants Pre-register at 707-207-0380 ext. 109

Directions: From Vallejo Take 80 East to the 680 Benicia/Green Valley Road exit. Take first exit: Green Valley Road, Right at stop (becomes Lopes Road). Continue to the next stop sign & turn left at Cordelia Road. Continue on Cordelia Road .7 mile. The Center is on the right at 4369 Cordelia Road.

10:00am – 12noon

Antioch Dunes National Wildlife Refuge Docent Tour

Join Docent Michael Krieg to learn about three endangered species on this refuge that occur nowhere else in the world – Lange's metalmark butterfly, Contra Costa wallflower and Antioch Dunes evening primrose. Arrive early to enter Refuge for tour as an escorted group. No late arrivals or early departures.

Directions: Take Hwy 4 east to Lone Tree/A Street exit in Antioch. Travel north on A Street, turn right on Wilbur Avenue, turn left on Fulton Shipyard Road, follow sign to gate.

10:00am-1:00pm

Lynch Canyon Birds of Prey Tour

Raptor expert Larry Broderick leads a tour to see eagles, hawks, falcons, owls and other birds of prey. Learn about bird identification, behavior and ecology. Bring water, snacks and binoculars. Wear layered clothes. Be prepared for sun, wind, fog and rain. All ages welcome. Must be able to hike four miles at a moderate pace, up and down steep hills. No dogs. Donation suggested, but not required. \$5 parking fee. Heavy rain cancels. Call Larry at 707-975-7047 if the weather is uncertain.

See Saturday 9:00am Lynch Canyon directions



Photo: Sarah Evans

10:00am – 1:00pm

Bike to the Weep!

Alviso Marina County Park, Alviso

Join microbial ecologist Wayne Lanier, PhD in the Alviso Marina County Park parking lot on a short bike ride to study microbial communities. The weep is a shallow persistent pond fed by seepage. Over the year it undergoes very wide swings in salinity and the result is a uniquely rich microbial community of Cyanobacteria, Archeobacteria, Diatoms, Dinoflagellates, and protozoa. Boots are recommended!

Ages 10 and up. RESERVATIONS REQUIRED. Call Debra at 408-262-5513 ext. 102.

11:00am-12noon

Beginning Birding for Families at American Canyon Wetlands

Repeats Saturday 1:00pm and Sunday 11:00am and 1:00pm

Napa Solano Audubon Society Field Guides offer a one hour guided Beginning Bird Walk for children and families. Learn the value of wetland habitats and how to locate & identify birds. (binoculars provided); No fee or preregistration.

Directions: Welcome table at corner of Eucalyptus Drive and Wetlands Edge Road. **See Friday 8:00am directions.**

11:00am - 1:30pm

Pond 1/Cullinan Ranch Ecology of the North Bay Walk

Join wetland biologist

Francesca Demgen, President, Friends of San Pablo Bay National Wildlife Refuge for a walk on the levee between two north bay habitats: shallow, managed pond and seasonal wetland. Potential to see hundreds of shorebirds and ducks foraging and resting in Pond 1 and song birds and raptors over the seasonal wetland. Learn how pickleweed and ducks can both "drink" salt water and about the thousands of

acres of wetland restoration between the Napa and Petaluma Rivers. Meet at the Outing Tent, [Building 223](#), Mare Island to form carpools.



Photo: Kathleen R. Fenton

12:30pm-4:00pm

Raptors at Hudeman Slough

Repeats Friday 9:00am

Join Napa area regional field trip leader Murray Berner for a birding walk on an easy jaunt along the 2.5 miles of walking trails at the Hudeman Slough wetland restoration in the Carneros region of Sonoma County. The enhanced wetlands, managed by the Sonoma County Water Agency & Sonoma County Sanitation with California Department of Fish & Game are former hayfields restored to tidal wetlands, grasslands, pickleweed marsh, seasonal wetlands & ponds, permanent ponds and tied to nearby Hudeman Slough. You will see waterbirds and search for a variety of buteos, including red-tailed, ferruginous, and rough-legged Hawks. Previous festival outings at nearby Skaggs Island have observed 4 species of falcons.

Regional Outings Saturday cont. and Sunday, February 13

Golden eagle is a distinct possibility. Short-eared Owl was seen here in late January. All ages and levels of birding experience welcomed! Note: This is a rain or shine outing. Only heavy rain cancels!

See Friday 9:00am directions

1:00pm-2:00pm

Beginning Birding for Families at American Canyon Wetlands
Repeats Saturday 11:00am and Sunday 11:00am and 1:00pm

See Friday 8:00am description and directions

1:30pm-2:30pm

Behind the Scenes Tour International Bird Rescue Research Center in Cordelia

Repeats Saturday 10:00am

See Saturday 10am description and directions.

2:00pm - 3:30pm

Good-bye Salt Ponds, Hello Hotel California Ravenswood Unit (SF2), Menlo Park Don Edwards San Francisco Bay National Wildlife Refuge

Docent Jane Moss leads a 1-mile hike to discover fascinating changes taking place at a former salt pond. Learn about how this area is being reshaped as wildlife habitat. Trail is easy and level. All ages and abilities welcome. Call 408-262-5513 x106 for directions.

4:30pm – 6:00pm

Twilight Marsh Walk Led by Mary and Gene Bobik.
Visitor Center, Fremont

Don Edwards San Francisco Bay National Wildlife Refuge

Experience the salt marsh at twilight on an easy stroll along Tidelands (1 1/3 mile) Trail. Discover the sights, sounds, and smells of the refuge as night descends. Not suitable for young children. RESERVATIONS REQUIRED. Call 510-792-0222 ext. 363.

Sunday, February 13

9:00am-5:00pm

Explore Lynch Canyon Open Space
Repeats Saturday 9:00am-5:00pm

See Saturday 9:00am description and directions

10:00am – 12:00noon

Life at the Bottom of the Food Chain
Visitor Center, Fremont

Don Edwards San Francisco Bay National Wildlife Refuge

Wetlands microbes are often called “the lungs of the earth.” Explore the dynamics of microbial communities in LaRiviere Marsh ponds with microbiologist Wayne Lanier, PhD for a brief presentation; then a microscope hike to the marsh to sample and view the most ancient creatures on earth. Easy short hiking level. Ages 9-90 years. Call 510-792-0222 ext. 363 for reservations.

11:00am – 12:00noon

Introduction to the Refuge
Visitor Center, Fremont

Don Edwards San Francisco Bay National Wildlife Refuge

Meet docent Roy Sasai for this introductory refuge program designed for the young and the young at heart. Learn what to see and do at a visitor center at the start of your adventure and how to adjust binoculars to enhance your experience. Dress warmly and bring rain gear, binoculars, camera, pocket notebook and pencil. Call for reservations at 510-792-0222 ext 363. Limited to 8 participants.

11:00am-12noon

Beginning Birding for Families at American Canyon Wetlands
Repeats Saturday 11:00am and 1:00pm and Sunday 1:00pm

See Saturday 11:00am description and directions

11:00am-1:00pm

Cullinan Ranch, San Pablo Bay National Wildlife Refuge Walk

Join wetland biologist Francesca Demgen, President, Friends of San Pablo Bay National Wildlife Refuge for bird viewing and discussion about the wetland restoration planned for the 1,500 acre former oat hay ranch on Highway 37, now part of the Refuge. Not normally open to the public. No facilities.

Directions: From Vallejo travel west on Hwy 37 toward Marin County. Ranch is 1.5 miles west of the Napa River Bridge. Turn right and follow signs to parking. From Marin and Sonoma travel east towards Vallejo on Hwy 37. Take the Mare Island Exit, cross over Hwy 37 on the overpass and proceed west 1.5 miles. Turn right and follow signs to parking.

1:00pm-2:00pm

Beginning Birding for Families at American Canyon Wetlands
Repeats Saturday 11:00am and 1:00pm and Sunday 11:00am

See Saturday 11:00am description and directions

1:00pm-3:30pm

Sears Point Cougar Mountain Hike

Hike Cougar Mountain with Julian Meisler, Baylands Program Manager for Sonoma Land Trust. Learn about grassland ecology, the Sears Point Restoration, explore vernal pools, and take in views of San Pablo Bay, San Francisco, Mt. Diablo, and Mt. Tam on a clear day. Meet at San Pablo Bay National Wildlife Refuge Headquarters.

Directions: From Napa and Sonoma continue westbound from Hwy 12/121 through light at Sears Point to light at Lakeville Hwy. Make U-turn at light. Refuge is .25 miles on right.

From Vallejo travel west on Hwy 37 to Lakeville Hwy light. Follow directions above.

From Marin eastbound on Hwy 37, Refuge is .25 miles on right after Lakeville Hwy light. Turn right into the driveway of an old dairy farm – there are no refuge signs but there will be cones at the entrance.

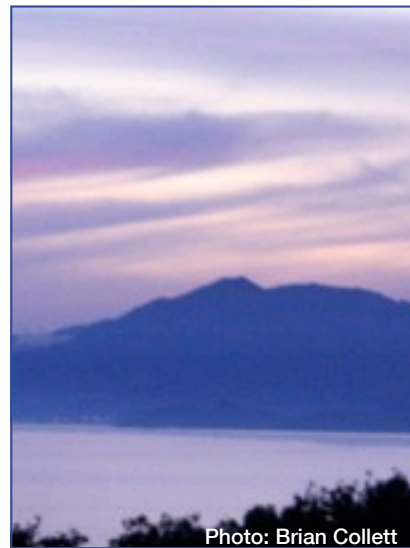


Photo: Brian Collett

2:00pm – 3:00pm

Barnacles, Mussels, and Snails, Oh My!
Meet at the Dumbarton Fishing Pier, Fremont
Don Edwards San Francisco Bay National Wildlife Refuge

Join docent Roy Sasai to learn about the bay shore life and its strange and unique ways of survival. Search for and capture some of the strange creatures to see them up close during this low-tide adventure. Learn how the bay has changed in the past 200 years and what is yet to come. This program is for the young and young at heart. Wear sturdy shoes, dress warmly, bring rain gear and magnifying glasses for optimal viewing. Call for reservations at 510-792-0222 ext 363. Limited to 8 participants.